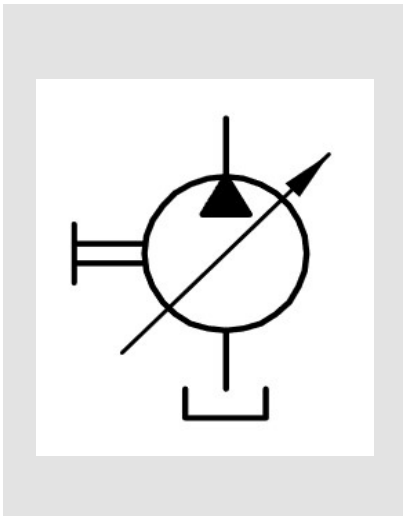


Axial piston pump type V60N



| Technical specification | |
|-------------------------|--|
| Type of device | Variable displacement axial piston pump |
| Sizes | 060, 090, 110, 130 |
| Design | Single pump Multiple pump |
| Principle | Swash plate principle |
| P_{Nenn} | 350 bzw. 400 bar |
| P_{max} | 400 bzw. 450 bar |
| V_{gmax} | 60 ... 130 cm ³ /rev |
| Front flange | ISO 7653, SAE-B 2/4-Loch, SAE-C 4-Loch |
| Shaft | DIN ISO 14, SAE-B, SAE-BB, SAE-C, SAE-CS |
| Controller | Flow controller Pressure controller Power controller |

Features and benefits

- Low power to weight ratio
- Wide range of controllers
- Narrow design to match the truck power take-off
- Driveability
- High self-priming speed

